

CLEANING



1 Remove diverter and wipe clean



2 Spray (mist) Falcon-recommended* cleaner onto bowl



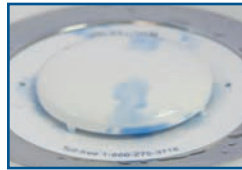
3 Wipe clean the entire outside and inside of bowl and replace diverter



Never dump cleaning solutions or other liquids into bowl

When Should a Cartridge Be Changed?

Blue sealant appears on top of the cartridge



OR Fluid flows very slowly into the cartridge.

OR Fluid does not drain into the cartridge.

CARTRIDGE CHANGE



1 Insert key into cartridge



2 Pour 1 gallon of soapy water into cartridge to displace urine



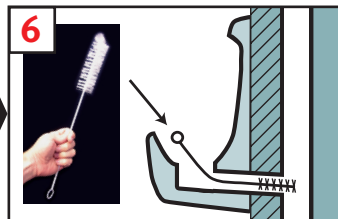
3 Turn key to left to unlock



4 Lift and tilt cartridge to drain all free liquids then spray Falcon Foam Cleaner** into housing



5 Place cartridge into bag, tie bag to seal and dispose



6 Scrub the housing and deep inside the tailpipe with a long 1.5-inch diameter nylon brush**



7 Flush housing with 5 gallons of hot soapy water then wipe clean inner stainless steel rim



8 Insert new cartridge into housing and turn key to right to lock



9 With diverter shield removed, fill cartridge with 1 quart or more of clean water until there are no air bubbles



10 Add blue sealant (allow time to drain into cartridge)



11 Spray (mist) Falcon-recommended* cleaner and wipe clean



12 Snap the diverter shield into place

*Falcon-recommended cleaners: www.falconwaterfree.com/literature/ **Supplies: <http://store.falconwaterfree.com/>

Falcon Customer Experience Department: 866-975-0174 (toll free) • 616-954-3570 • Fax 616-954-3479 • service@falconwaterfree.com