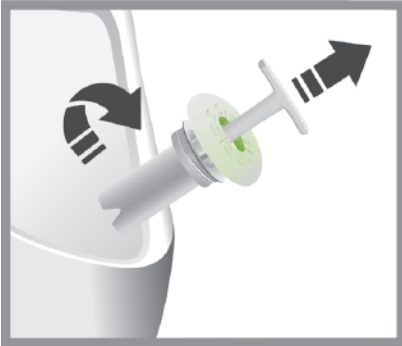
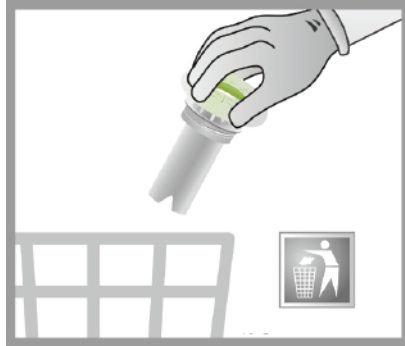


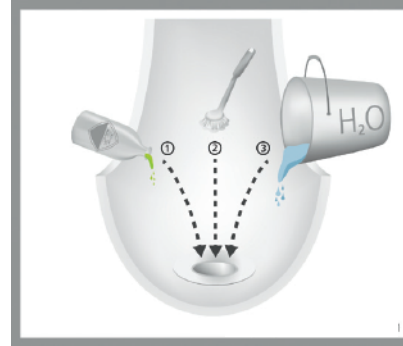
## High Performance Key-Valve® Replacement



Place the Service- Key into the High Performance Key-Valve (HPKV) and turn counter clockwise to unscrew the HPKV from the Key-Adapter



Dispose of the HPKV cartridge in any normal waste bin.

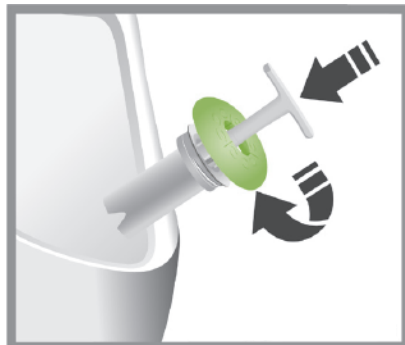


Flush the urinal with a bucket of water container cleaner, scrub thoroughly with a brush and then flush with a bucket of water containing cleaner again.

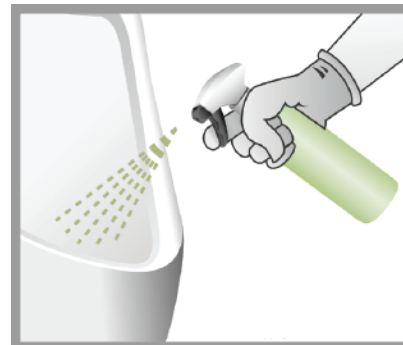
**NOTE:** For this cleaning use a concentrated acid cleaner.



Remove HPKV from packaging and, with a slight counter clockwise twist, plug they Service-Key into the new HPKV cartridge.



Using the Service-Key, screw the HPKV clockwise into the Key-Adapter until the valve sits evenly.



Activate the new HPKV by flushing about 5 liters of soapy water. Spray urinal with pH neutral cleaner\*. Do NOT wipe afterwards.

### WHEN TO CHANGE THE HPKV

As soon as the green Key-Ring is empty, the HPKV needs to be replaced. This occurs after approximately 7,500 uses.

### ONGOING URINAL CLEANING

**Caution** When performing ongoing cleaning and urinal bowl maintenance, Do not use harsh cleaners (such as Chlorine or bleaches) or solvent based cleaning agents (such as acids or alkalines).

\* Use a mild surfactant based pH neutral cleaner (0-15% anionic and/or non-ionic surfactants). Uncritical additives include enzymes, perfume, oils, dyes, inhibitors, etc.

### ATTENTION

This valve has been designed and tested to operate only as manufactured. Under no circumstances should the valve be altered in any way.