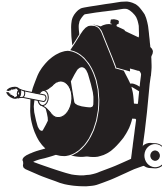
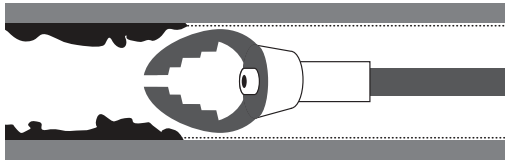


KEYS TO A SUCCESSFUL INSTALLATION

FOLLOW FALCON INSTALLATION INSTRUCTIONS

To ensure a successful installation, follow the step by step installation instructions provided with your Falcon Waterfree Urinal. All installation instructions are also available at www.FalconWaterTech.com

CLEAN THE DRAIN LINE AND CONFIRM NO COPPER DWV

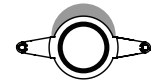


IMPORTANT Use a drain machine to remove build up inside pipes. Clean as far into the line as possible, up to 25 feet, to remove debris.

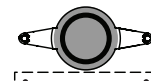
IMPORTANT Ensure there is no copper piping. **DO NOT** under any circumstances install Falcon Waterfree urinals in a restroom with copper DWV.

ADJUST PITCH/SLOPE

1. Check if slope is correct by removing the cartridge and pouring water into the housing unit. If there is any standing liquid, please follow the next steps.
2. If necessary, cut out a small area of the wall above the nipple.
3. Raise the nipple enough to achieve proper pitch, then brace with a mending plate*.
4. Re-check for pitch/slope using clear inspection disk to verify if the adjustment is sufficient.
5. Use a building code approved caulking to seal around the drain nipple.



Cut away wall

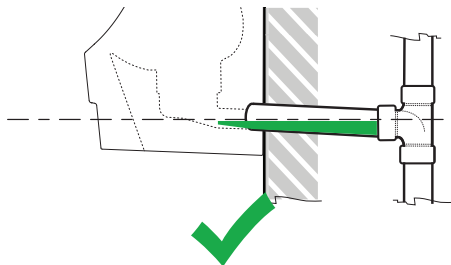


Lift drain line & brace with mending plate

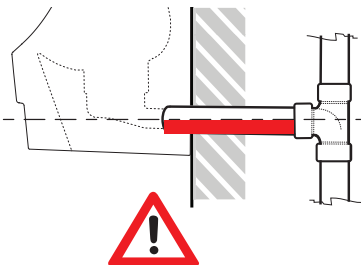
*Mending plates are a common solution for bracing drain lines. Use whatever method provides the best and most stable results for your application.

PLUMBING CODE REQUIREMENTS

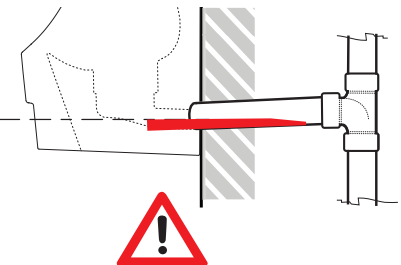
2" pipe requires a minimum fall (slope) of 1/4" per foot (2% grade)



CORRECT
DOWNHILL PITCH/SLOPE
(MEETS CODE)



INCORRECT
FLAT OR NO PITCH/SLOPE
(DOES NOT MEET CODE)



INCORRECT
UPHILL PITCH/SLOPE
(DOES NOT MEET CODE)

PROPER ONGOING MAINTENANCE

With the urinal installed properly and water flowing freely down the housing into the drain line, review and follow the Cleaning and Cartridge Change out Instructions, on the reverse. Instructional video is available online at www.FalconWaterfree.com.

If you have any other concerns with your Falcon Waterfree Urinals, please contact us directly at the number below or email us at Info@FalconWaterTech.com.



CAUTION: When either 1) removing an existing urinal from the drain line or 2) changing a waterless urinal cartridge, it's normal for certain naturally occurring but potentially hazardous sewer gases to escape through the open drain line. If you need to leave an open drain line unattended after removing the urinal from the wall, temporarily wedge paper towels or a rag into the drain hole to reduce any outflow of sewer gases, and remove the paper towels or rag prior to completing the urinal or cartridge installation. **Never smoke, have an open flame, or place your nose or mouth near open drain lines or waterless urinal housings into which a cartridge is not yet properly installed.** You also can wear a breathing mask when removing or installing any waterless urinal or cartridge to reduce potential exposure to any such gases.